

TSXV : **NFD.A**



NORTHFIELD
CAPITAL CORPORATION

The Premier Public Gateway to Ontario's Ring of Fire

INVESTOR PRESENTATION - APRIL 2026

Disclaimer



Legal Disclaimer

This presentation of Northfield Capital Corporation (“Northfield” or the “Company”) is for information only and shall not constitute an offer to buy, sell, issue or subscriber for, or the solicitation of an offer to buy, sell, issue or subscribe for any securities of the Company or of any affiliated or associated companies, or in any jurisdiction. The information contained herein is subject to change without notice and is based on publicly available information, internally developed data and other sources. Where any opinion or belief is expressed in this presentation, it is based on the assumptions and limitations mentioned herein and is an expression of present opinion or belief only. No warranties or representations can be made as to the origin, validity, accuracy, completeness, currency or reliability of the information. The Company disclaims and excludes all liability (to the extent permitted by law) for losses, claims, damages, demands, costs and expenses of whatever nature arising in any way out of or in connection with the information in this presentation, its accuracy, completeness or by reason of reliance by any person on any of it. This presentation should not be construed as legal, financial or tax advice to any individual, as each individual’s circumstances are different. Readers should consult with their own professional advisors regarding their particular circumstances. There are certain risks inherent in an investment in the securities of the Company that prospective investors should carefully consider before investing in the securities of the Company.

Forward Looking Information

This presentation of Northfield contains “forward-looking information” within the meaning of applicable Canadian securities legislation and “forward-looking statements” within the meaning of applicable United States securities legislation, together, “forward-looking statements”. Such forward-looking statements contain known and unknown risks, uncertainties, and other factors that may cause our actual results, performance, or achievements, or developments within our industry, to differ materially from the anticipated results, performance, or achievements expressed or implied by such forward-looking statements. Forward-looking statements are statements that are not historical facts and are generally, but not always, identified by the words “expects”, “aims”, “plans”, “anticipates”, “believes”, “intends”, “estimates”, “projects”, “potential”, and similar expressions, or that conditions “will”, “would”, “may”, “could”, or “should” occur. Forward-looking statements included in this presentation include, but are not limited to: (i) projected performance of the Company, including statements with respect to the Company’s share price, the share price and value of its investment portfolio and other financial metrics related thereto; (ii) statements with respect to each Northfield share representing a Juno share; (iii) the expected financial results of its investment portfolio companies; and (iv) execution of the Company’s vision and growth strategy, including with respect to any future activity. There can be no assurance that such statements will prove to be accurate. Actual results and future events may differ materially from those anticipated in such statements and readers are cautioned not to place undue reliance on these forward-looking statements that speak only as of their respective dates. Important factors that could cause actual results to differ materially from the Company’s expectations could include among others: risks related to fluctuations in market price (including each Northfield share representing a Juno share and their respective price and rights attached thereto (readers should note that any such statement does not account for the relative values of such shares and the fact that Juno is not a wholly-owned subsidiary of Northfield), prices of raw material used by the Company’s investment companies and mineral prices; the possibility that results will not fulfill expectations and realize the perceived potential of the investments in question; political uncertainty; uncertainties in the estimation of any potential future exploration success at the Company’s mineral related investments; the possibility that required permits may not be obtained in a timely manner or at all; the possibility that capital and other costs may be higher than estimated and may preclude or render future exploration and development uneconomic; risk of accidents, equipment breakdowns or labour disputes or other unanticipated difficulties or interruptions; the possibility of cost overruns or other unanticipated expenses; the risk of environmental contamination or damage resulting from the Company’s operations; risks associated with title to properties; risk associated with the health pandemics; and other risks and uncertainties discussed elsewhere in the Company’s documents made publicly available from time to time and available on SEDAR+. These statements are based on a number of assumptions; including assumptions regarding general market conditions, the availability of financing for proposed transactions and programs on reasonable terms, and the ability of outside service providers to deliver services in a satisfactory and timely manner. Forward-looking statements are based on the beliefs, estimates, and opinions of the Company’s management on the date the statements are made. Except as expressly required by applicable securities laws the Company undertakes no obligation to update these forward-looking statements in the event that managements beliefs, estimates, opinions or other factors, should change.

Non-IFRS Measures

Northfield uses certain non-International Financial Reporting Standards (IFRS) performance measures in this presentation. These performance measures have no meaning under IFRS and, therefore, amounts presented may not be comparable to similar data presented by other mining companies. The data is intended to provide additional information and should not be considered in isolation or as a substitute for measures of performance prepared in accordance with IFRS.

Public Data

This presentation also contains or references certain industry data which is based upon information from independent industry publications, market research, analyst reports and surveys and other publicly available sources. Although the Company believes these sources to be generally reliable, such information is subject to interpretation and cannot be verified with complete certainty due to limits on the availability and reliability of raw data, the voluntary nature of the data gathering process and other inherent limitations and uncertainties. The Company has not independently verified any of the data from third party sources referred to in this presentation and accordingly, the accuracy and completeness of such data is not guaranteed.

Scientific and Technical Information

The scientific and technical content of this presentation has been reviewed and approved by Scott Zelligan, P. Geo. (PGO #2078), a “qualified person” as defined by National Instrument 43-101 – *Standards of Disclosure for Mineral Projects*. Mr. Zelligan has verified the data disclosed in this presentation and no limitations were imposed on his verification process.

Confidentiality

This presentation is confidential and is being provided to you solely for your information and may not be reproduced, in whole or in part, in any form or forwarded or further distributed to any other person. Any forwarding, distribution or reproduction of this presentation, in whole or in part, is unauthorized. By accepting and reviewing this presentation, you acknowledge and agree (i) to maintain the confidentiality of this presentation and the information contained herein, (ii) to protect such information in the same manner you protect your own confidential information, which shall be at least a reasonable standard of care, and (iii) to not utilize any of the information contained herein except to assist with your evaluation of the Company. This version of the presentation supersedes and replaces any and all versions of this presentation previously provided to you.

Northfield *at a Glance*



Northfield Capital is a diversified investment and operating company with significant exposure to **Ontario's Ring of Fire** through its strategic stake in **Juno Corp.**⁵

Total Assets

\$190M¹

Audited YE2025 \$156M²

Shares Outstanding

27.0M¹

NFD holds ~1 Juno share for every 1 NFD share outstanding

Market Cap¹

\$140M

Juno Ownership

~35%¹

Valued @ \$109M = ~78% of current market cap

Track Record⁴

\$5B+

Management's Proven Track Record of Value Creation

NAV / Share^{1, 4}

\$6.35

At Juno's last financing price in Dec 2025 (C\$4.00)

NFD.A Share Price¹

\$5.20

An 18% discount to NAV (book)

District-Scale Position

~5,800 km²

Largest Claimholder in Ontario's Ring of Fire

1 – As of April 10, 2026. Estimates are management calculations after giving effect to the completion of Juno Corp. transaction announced in the Company's news release dated April 2, 2026.

2 – Per December 31, 2025 Consolidated financial statements.

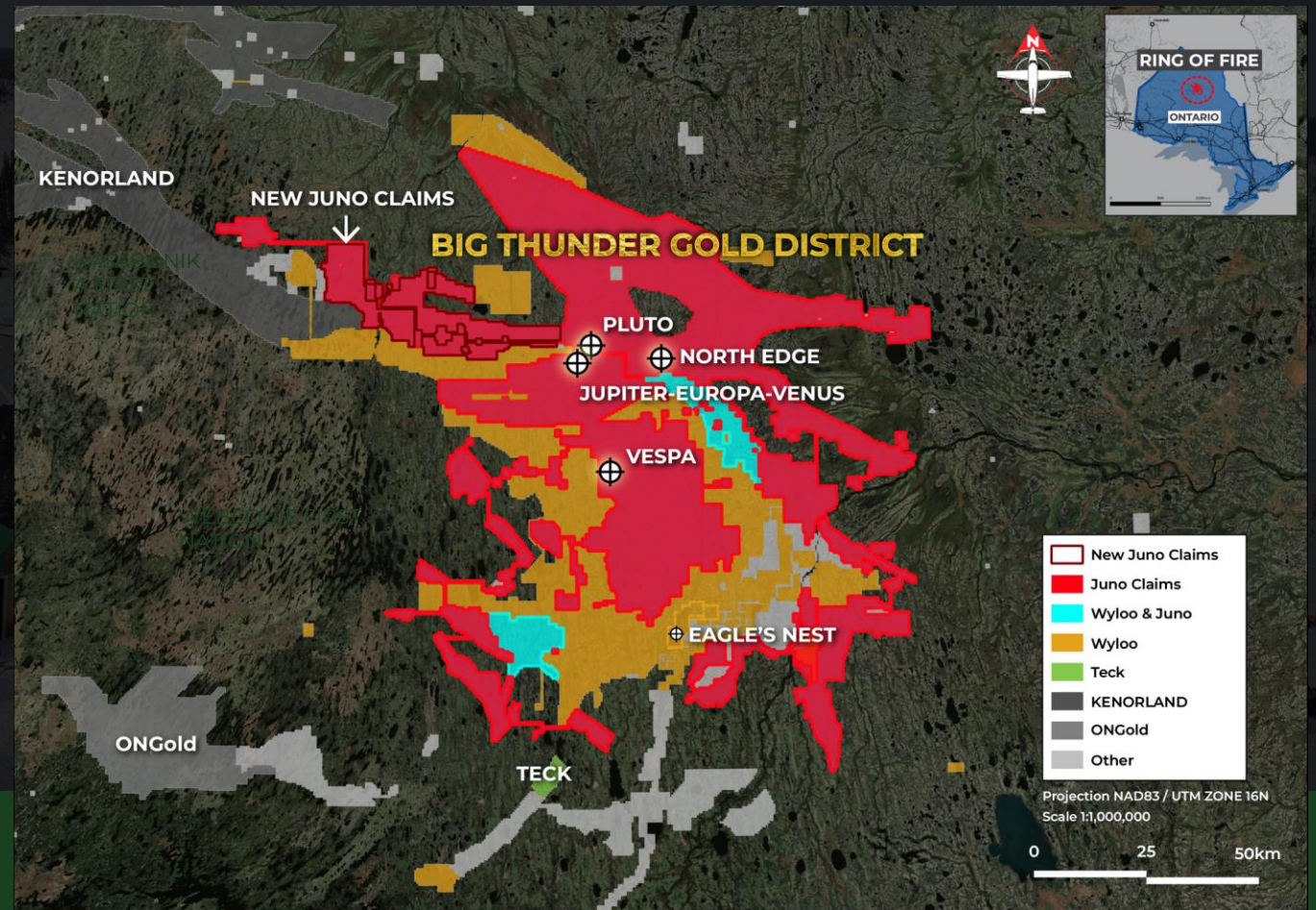
3 – NAV/share reflects Juno at its most recent private financing price (C\$4.00/share). NAV does not incorporate any value for exploration upside, resource definition, or district-scale discovery potential.

4 – NAV/share is a Non-IFRS financial measure. See the Company's MD&A for the year ended December 31, 2025 for a reconciliation to the nearest IFRS measure.

5 – See Slide 14 for management's track record of value creation.

JUNO CORP

Largest Claimholder in Ontario's Ring of Fire



“We believe this is a significant discovery with Bushveld-scale potential—right here in Canada.”

Robert Cudney
Founder & CEO, Northfield Capital

~5,800 km²

District Scale
Position

Approximately 52% of
Ring of Fire mineral
claims by area

**Gold & Critical
Minerals**

Strategic Portfolio

Big Thunder: high-grade gold
Vespa: high-grade critical minerals

\$37M

Cash to start 2026

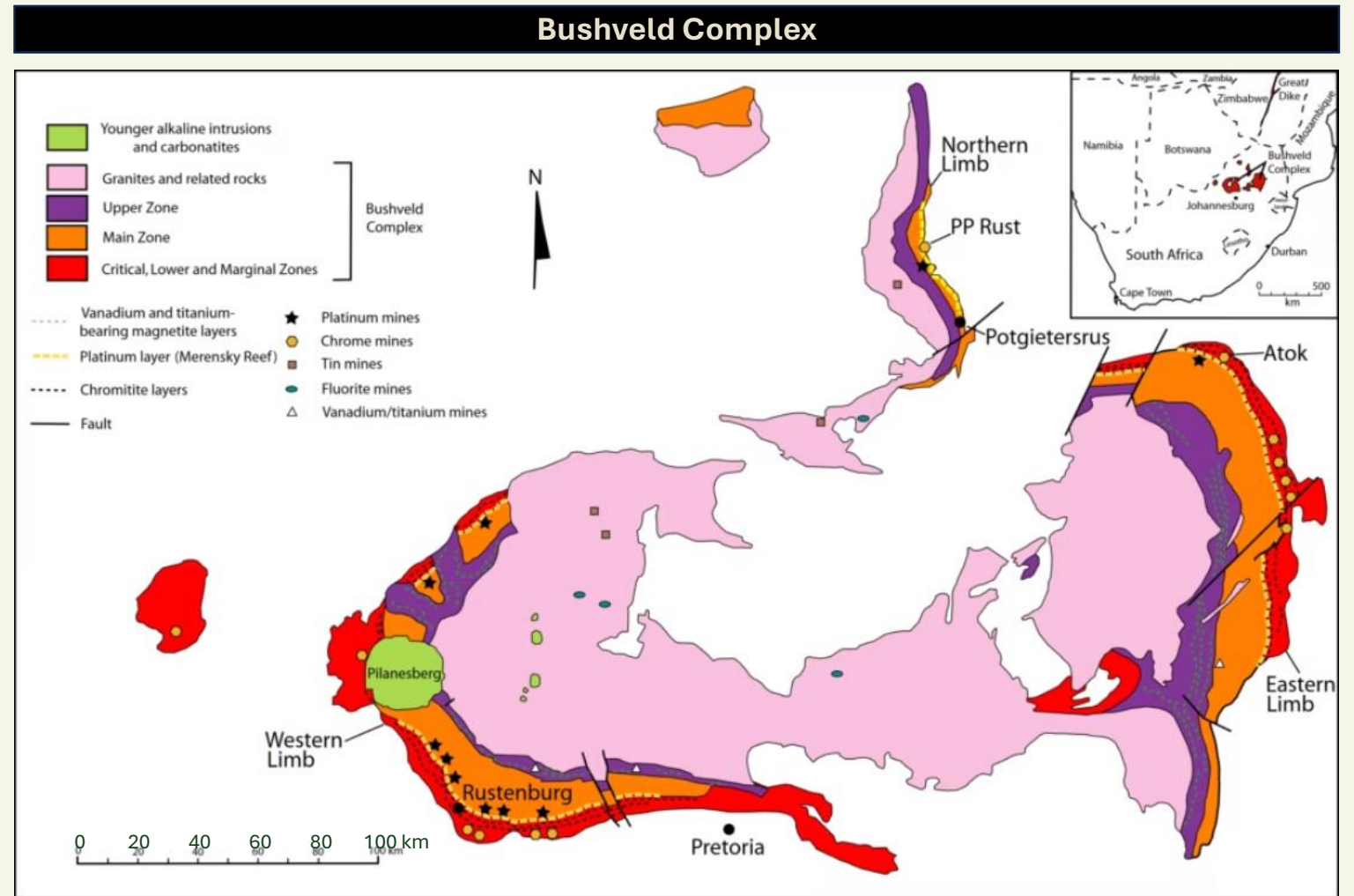
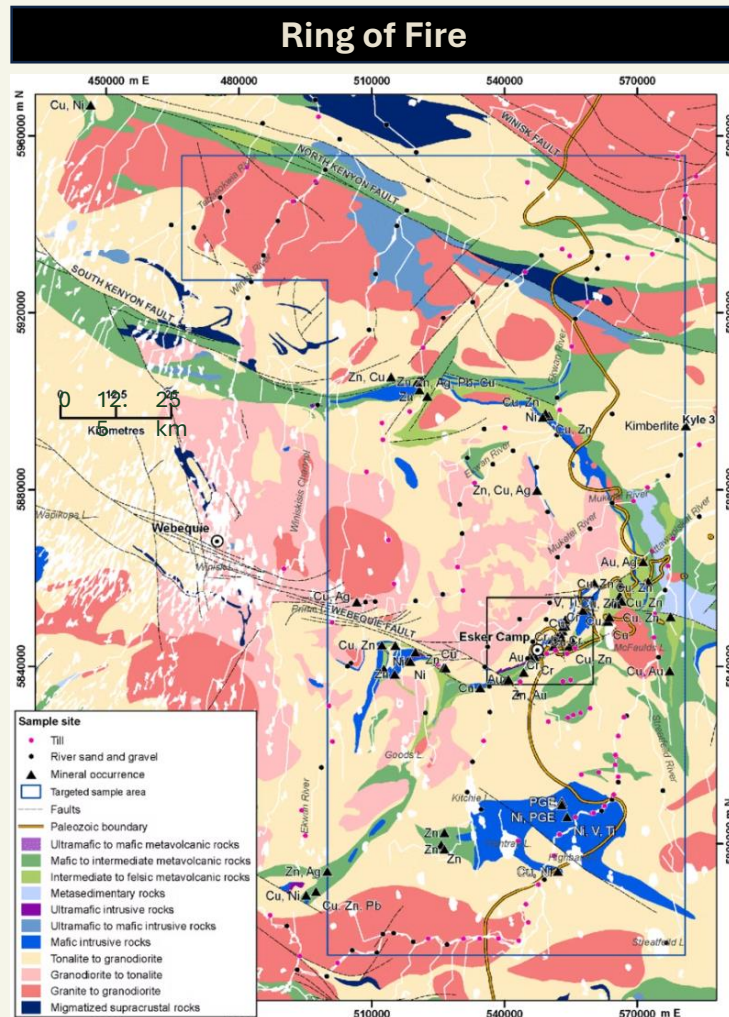
Fully funded for 2026
exploration programs

Bushveld

Ring of Fire Comparison



The Bushveld Complex carried South Africa's economy for over a century. The Ring of Fire has the **potential scale and metal endowment** to deliver **similar strategic value for Canada**.



Bushveld

Ring of Fire Comparison



Metric	Bushveld Complex (South Africa) ¹	Ring of Fire (Ontario, Canada)
Land Package	~5,000 km ²	~5,800 km ² (Juno-controlled)
Key Metals	V, Ti, Fe, PGMs, Ni, Cr, Cu, Au	V, Ti, Fe, Ni, Cr, Sc, Au, Cu, Ga, Pt, Pd, Zn, Pb, Ag
Production Lifespan	100+ years (active since 1920s)	Just beginning—multi-decade horizon
Economic Value	US\$100B+ contributed to economy	Multi-billion dollar potential
Strategic Importance	Backbone of South African economy	Potential mineral powerhouse of Canada

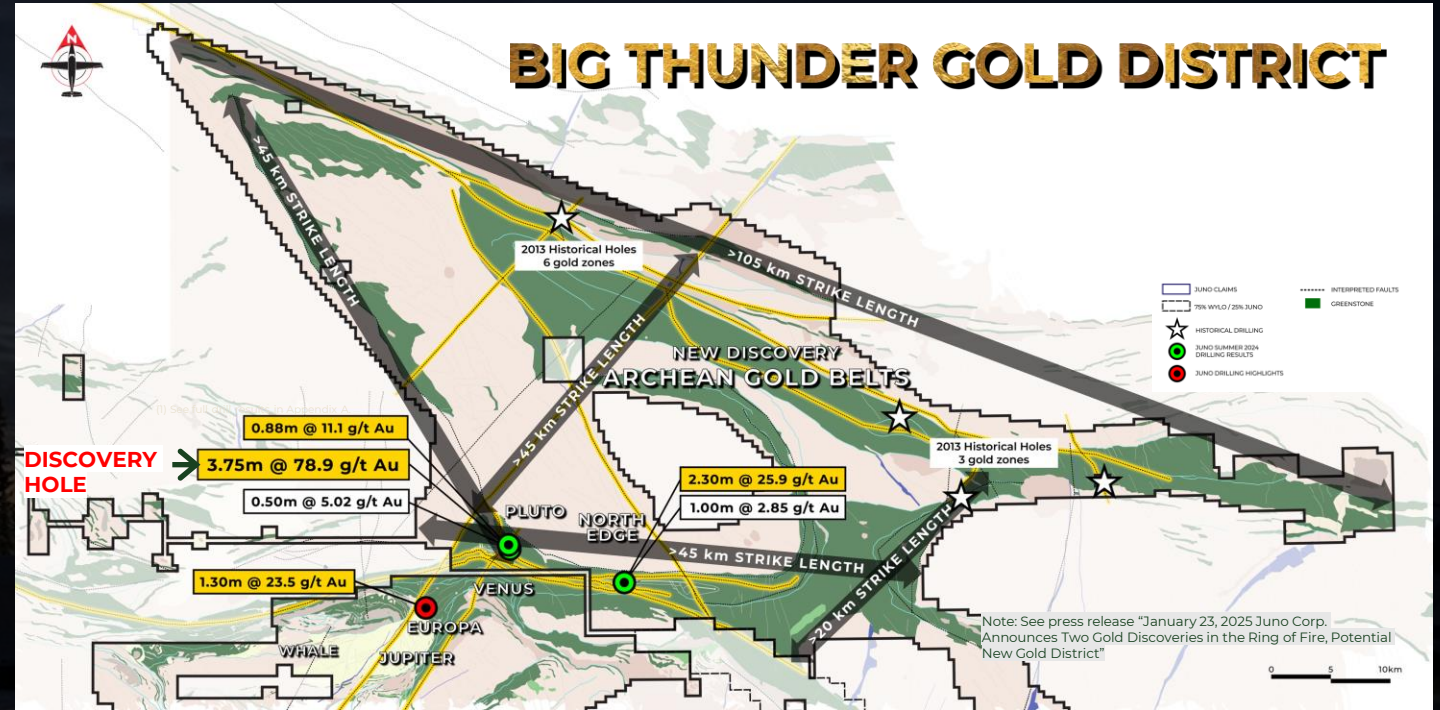
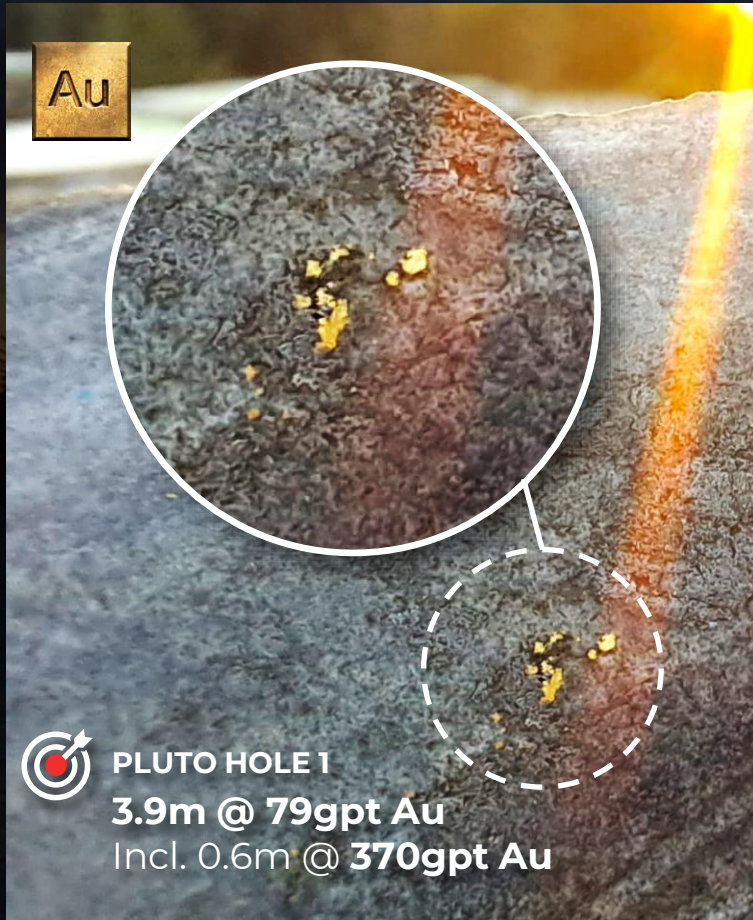
Potential to be a *Strategic National Asset*

¹ – Minerals Council South Africa – National Platinum Strategy available at <https://www.mineralscouncil.org.za/>

Note: Bushveld comparison is for illustrative purposes only and not necessarily indicative of the mineralization at Juno's mineral properties.

Big Thunder

An Emerging Gold District

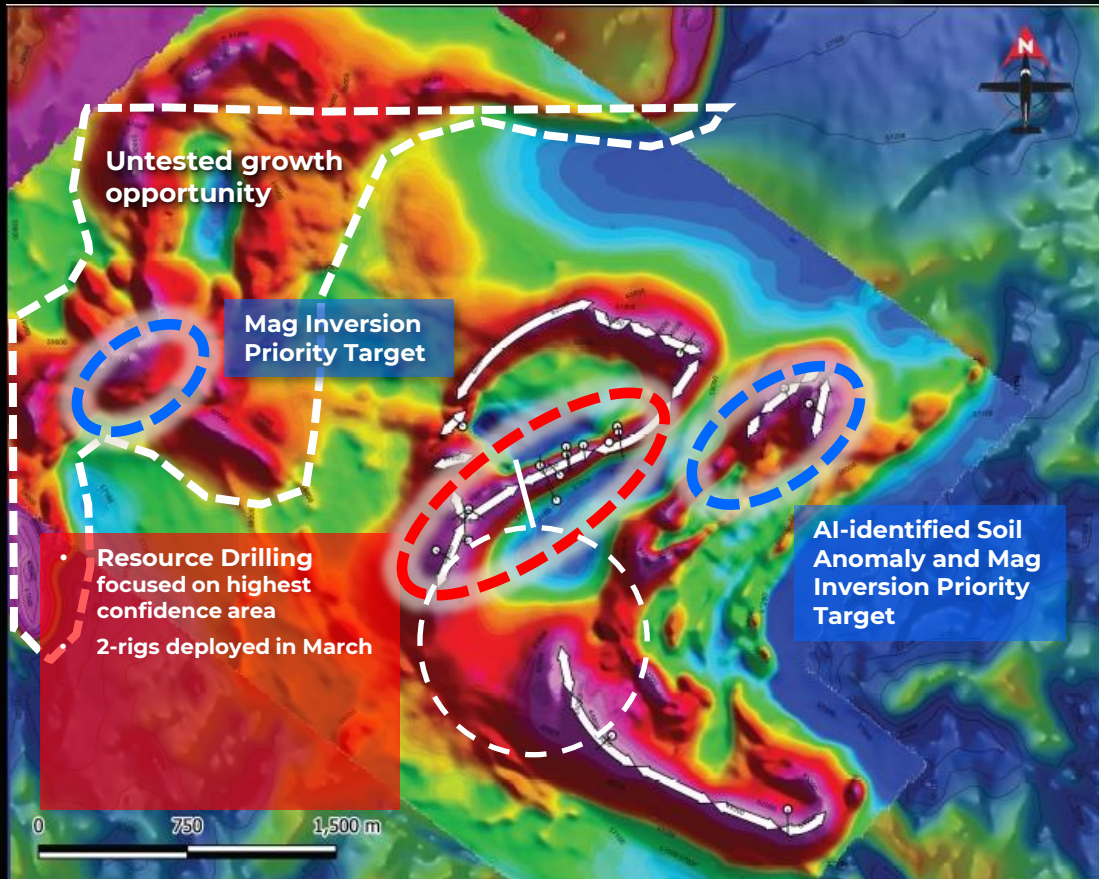


- Discovered August 2024
- First hole hit visible gold
- **High-grade visible gold across multiple structures**
- Multiple mineralized structures identified across a multi-kilometre trend
- Largest gold-focused drill program in Ring of Fire history planned for 2026
- \$10M allocated for 2026 Big Thunder drilling

Gold doesn't need a road!

Vespa Critical Minerals Complex

Discovered in 2024 – Significant Impact



Energy & Critical Mineral Hub



- **Two Metal Products**
 - **High-grade vanadium**
65% high-purity iron and vanadium 2%
 - **High-grade titanium**
65% - 70% TiO₂ with scandium +75 gpt
- 9 critical minerals discovered to date
- Three deposit targets: Vespa, Saturn, Vulcan
- Large-scale layered intrusion-hosted mineralization
- \$10M allocated for Vespa advancement in 2026

Ring of Fire Infrastructure: The Inflection Point

Government commitment unlocking a significant district



2024

Ontario-Canada bilateral agreement to fast-track permitting and eliminate regulatory duplication

2025

Environmental assessments advancing for Webequie Supply Road and connecting corridors

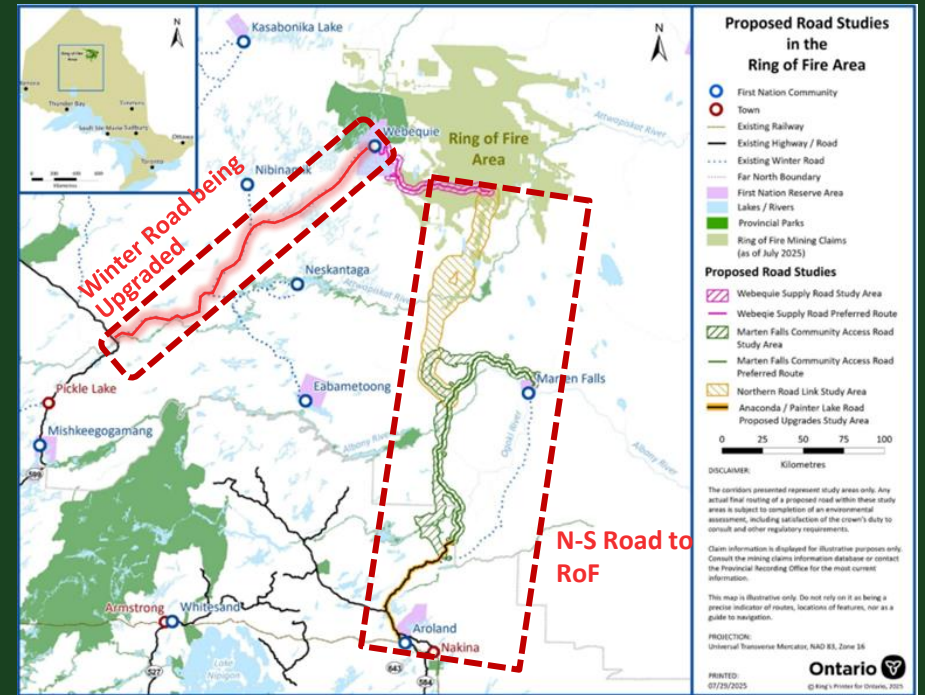
June 2026

Road construction begins — first major infrastructure build in the Ring of Fire

\$1B+

Committed by Ontario to Ring of Fire road infrastructure. Power transmission line planning underway. This is the first time road, power, and regulatory infrastructure are advancing simultaneously.

Proposed Ring of Fire access roads (Ontario Government)



Source (Ontario \$1B+ commitment): CBC News, referencing Ontario government commitment. <https://www.cbc.ca/news/canada/thunder-bay/greenstone-transmission-line-9.7065069>

Why Europe Should Care

EU Critical Raw Materials Act & Canadian Supply Security



EU Critical Raw Materials Act (2024)

Mandates that by 2030, at least 10% of EU annual consumption of strategic raw materials must be extracted domestically or from trusted allied nations. Canada — through CETA — is a preferred partner for critical mineral supply chain diversification. Source: Regulation (EU) 2024/1252 — EU Critical Raw Materials Act, April 2024.

Vespa Metal	European Industrial Need	EU CRM Status
Titanium	Aerospace, defense	On EU CRM list
Vanadium	Battery storage, steel	On EU CRM list
Scandium	Al alloys, fuel cells	On EU CRM list
Gallium	Semiconductors, 5G	On EU CRM list
High-purity Iron	Premium EAF steel	Strategic feedstock

A potential Canadian answer to European critical mineral *supply chain security*.

Juno Near-Term Catalysts



① Juno Ownership Increase

~35% closed April 2 — path to further strategic accumulation

② Drill Results Flowing NOW

Big Thunder gold + Vespa critical minerals — 2026 drill season underway

③ Maiden Vespa Resource Estimate

H2 2026 targeting initial resource

④ Ring of Fire Road Construction

Begins June 2026 — Ontario committed \$1B+

Multiple *value drivers* converging in 2026

Management, Board & Advisors

Proven Track Record of Value Creation



Executive Leadership



Robert Cudney Chief Executive Officer, President, Director & Founder
Over 40 years of mining and capital-markets leadership. Co-founded and financed multiple billion-dollar resource successes — including Gold Eagle Mines (C\$1.5 B exit – 2008), FNX Mining / Quadra (C\$3.5 B exit – 2012), Queenston Mining (C\$550 M exit – 2012), and Guyana Goldfields (C\$323 M exit – 2020). A systematic builder whose incubator model has generated C\$5 B+ in realized value. Recipient of the Bill Dennis Award for the discovery of the Bruce Channel Deposit.



Michael G. Leskovec, CPA, CA Chief Financial Officer
Chartered Accountant with 20+ years of capital markets and corporate finance experience across investment, mining, and diversified operating businesses. Known for strategic execution, disciplined financial leadership, and value creation through Northfield's incubator model.



Fraser Laschinger VP Investments
Over 15 years experience in capital markets and the mining sector. Skilled in investment analysis and sector assessments, and strategic leadership; serving as an executive for a number of portfolio companies. Previously worked in equity research for a Canadian investment dealer.



Jeremy Niemi, PGeo Geological Advisor
Professional Geoscientist with 25+ years of experience in mineral discovery and deposit growth across gold, base, and critical metals. Skilled in exploration targeting, resource expansion, and multidisciplinary team leadership, with notable success in advancing major mineral systems including the Eagle's Nest nickel-copper-PGE deposit.

Board of Directors



Ernie Eves, Q.C, LL.D.
Former Premier of Ontario (2002 - 2003) and former Finance Minister (1995-2001), deep government and regulatory expertise.



John McBride, ICD.D
Institute of Corporate Directors Designation, 40+ years experience capital markets & investment management



Eric Klein, ICD.D, CBV, CPA CA
35+ years experience with TSX-listed companies in both investment, exploration and mining industries



Morris Prychidny, CPA, CA
35+ years experience in mining, entertainment and real estate industries as well as capital markets



Maryke Ballard
Vice President of Orion Capital Incorporated, a private investment company in Toronto, Canada, ESG and stakeholder engagement specialist

Proven Track Record

Decades of Billion-Dollar Success

Northfield's management team has a **25-year track record** of building mining companies **at scale**.

Company	Role	Acquisition Value	Acquirer
Gold Eagle Mines	Co-Founder	C\$1.5 B	Goldcorp (2008)
FNX Mining	Co-Founder	C\$3.5 B	KGHM (2012)
Queenston Mining	Early Investor	C\$550 M	Agnico Eagle (2012)
Guyana Goldfields	Co-Founder	C\$323 M	Zijin Mining (2020)
Voyageur Mineral Explorers	Acquired 2019	C\$23M (RTO 2025)	Evolve Strategic Royalty (Nov 2025)

"Northfield's team has delivered over *\$5 billion* in realized shareholder value. Juno represents the *most significant discovery to date*—and it's just getting started."

Robert Cudney
Founder & CEO, Northfield Capital

Note: Past success does not guarantee future success and each opportunity should be evaluated on its own merits. The \$5B+ figure represents aggregate acquisition/exit transaction values: Gold Eagle Mines C\$1.5B, FNX Mining C\$3.5B, Queenston Mining C\$550M, Guyana Goldfields C\$323M.

Northfield Accelerator Model

A Proven System for Building Value

Repeatable approach to **unlocking value** in undervalued natural resource companies.

Accelerator model aims to combine strategic control and patient capital **to realize premium exits.**

1

IDENTIFY

- Source undervalued opportunities before the market.
- Deep sector expertise and networks surface assets with hidden potential.



2

ACQUIRE CONTROL

- Take strategic ownership and board representation to drive direction and implement value-creation initiatives.



3

BUILD VALUE

- Deploy capital, expertise, and operational discipline to de-risk and scale alongside management.



4

MONETIZE STRATEGICALLY

- Exit through M&A or RTO at premium valuations. Strategic timing maximizes returns to well-capitalized acquirers.



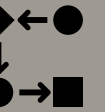
5

REINVEST

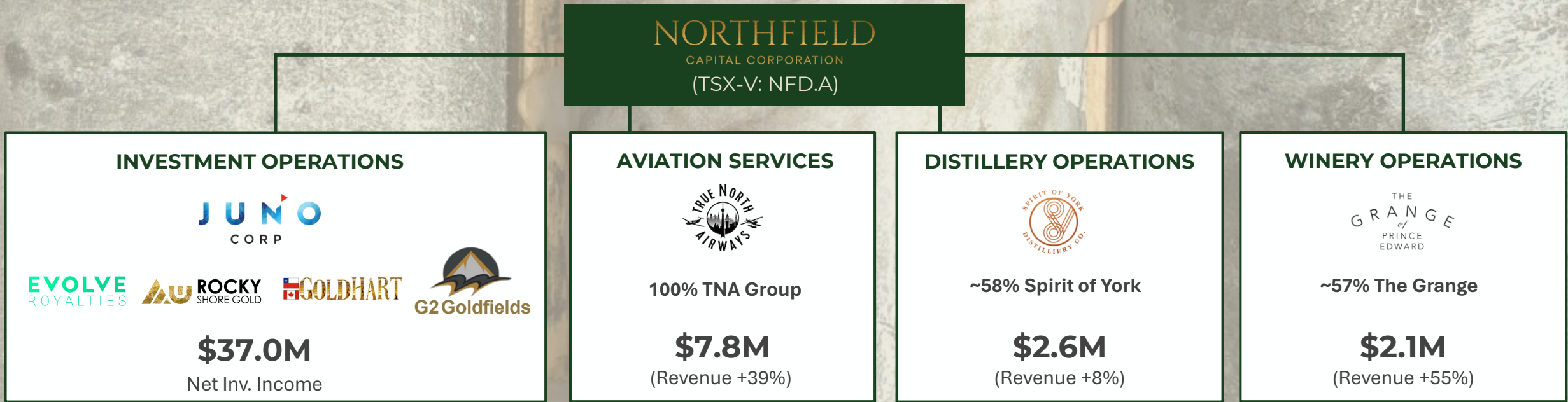
- Recycle capital into the next generation of high-potential assets.
- Disciplined redeployment compounds returns over time.



COMPOUNDING GROWTH



Corporate Structure



INVESTMENT ENGINE
Aggressive Returns



OPERATING ENGINE
Scaling Operations

Value creation driven by dual engines

Exploration Portfolio



Five Fully Funded Programs — Five Shots at Discovery

Northfield maintains board or advisory representation at each company. Every program is fully funded for 2026.



Evolve Royalties

CSE: EVR | NFD: ~9%

Base & critical metals royalty portfolio. USD\$32.5M tin royalty acquisition on producing Uis Mine (Namibia). Cash-flowing.

Royalties on 3 of Canada's premier copper operations



GoldHart Copper

TSX-V: HART | NFD: ~5%

Large-scale gold-copper porphyry in Chile's Vicuña District. Adjacent to Lundin-Filo-BHP complex. \$18.6M financing.

Drilling NOW in world-class district



Rocky Shore Gold

CSE: RSG | NFD: ~17%

100%-owned Gold Anchor Project in Newfoundland. One of the largest land packages in an emerging gold district. \$6.1M placement.

Inaugural drill program 2026



Boreal Gold

CSE: BGLD | NFD: ~9%

High-grade gold assets near Snow Lake, Manitoba. Drilling planned for 2026 funded by \$3M financing.

High-grade gold — drill-ready



G2 Goldfields

G2 Goldfields

TSX-V: GTWO | NFD: <1%

Recently acquired by G Mining for ~\$3B. Validates the Cudney network.

\$3B exit — Cudney involvement

Every program is a potential re-rating catalyst — and *none of it is priced into our NAV.*

Aviation Advantage

Accelerating Exploration Through Wholly-Owned True North Airways

Vertical integration of aviation assets is a **strategic differentiator**—enabling **faster discovery cycles** and **operational control** in one of **Canada's most remote regions**.

“Owning the aircraft has *rapidly accelerated* Juno's exploration programs. What used to take months *now takes weeks.*”

Robert Cudney

Founder & CEO, Northfield Capital



100% OWNED

- Revenue: \$7.8M (+39% YoY)
- Gross Margin: 28.8% (up from 22.5%)



Fleet & Capabilities

- 12 aircraft: jets, turboprops, helicopters
- Dedicated charter and cargo support for Juno's remote exploration logistics as well as full fledged executive charter business
- Dramatically shortens timelines and reduces third-party costs in challenging terrain
- Launched in South America (El Salvador)

Other Operating Brands



The Grange of Prince Edward Winery

57.6% OWNED



A premium estate, award-winning winery located in Prince Edward County, Ontario—one of Canada's fastest-growing wine regions.

- Revenue: \$2.6M (+8% YoY)
- Gross margin: 22% (up from 20%)
- Largest winery in Ontario by planted acres
- Positioned for expanded hospitality and retail revenue in 2026+
- LCBO distribution expansion
- High-profile hospitality partnerships with key Ontario venues



Spirit of York Distillery

56.7% OWNED



A premium, award-winning, Toronto-based craft distillery producing spirits including vodka, gin, whiskey, and liqueurs.

- Revenue: \$2.1M (+55% YoY)
- Gross margin: 23% (up from 13%)
- LCBO distribution, tourism, hospitality partnerships
- Strategic **Live Nation** partnership as official gin brand
- Distribution expansion and brand awareness drive revenue growth

Combined operating revenue: **\$12.5M** (+33% YoY) | Consolidated gross margin: **26%** (up from 21%)

Financial Snapshot

Audited YE2025 Financial Highlights



Metric	YE2025 ¹	YE2024 ¹	Change
Total Assets	\$156.4M	\$86.8M	+80%
Revenue	\$12.5M	\$9.4M	+33%
Net Income to Shareholders	\$20.3M	\$2.3M	+793%
Basic EPS	\$1.26	\$0.19	+563%
EBITDA	\$24.2M	\$3.7M	+554%
Adjusted EBITDA	\$3.7M	(\$15.0M)	n/m³
NAV/Share @ Dec 31	\$6.60⁴	\$5.55	+19%
Cash @ Dec 31	\$10.9M	\$3.6M	+204%
D/E Ratio	0.18	0.19	Conservative

Post-Transaction ^{1,2}	April 10, 2026
Shares Outstanding	27.0M
Total Assets	\$190M
Juno Ownership	~35%

1 – Amounts in Canadian Dollars

2 – YE2025 figures are audited. Estimates are management calculations after giving effect to the completion of Juno Corp. transaction announced in the Company's news release dated April 2, 2026.

3 – n/m = not meaningful

4 – NAV/share is a Non-IFRS financial measure. NAV/share reflects Juno at its most recent private financing price (C\$4.00/share). NAV does not incorporate any value for exploration upside, resource definition, or district-scale discovery potential. See the Company's MD&A for the year ended December 31, 2025 for a reconciliation to the nearest IFRS measure.

5 – EBITDA and Adjusted EBITDA are Non-IFRS financial measures. See the Company's MD&A for the year ended December 31, 2025 for reconciliations.

Value Disconnect

NAV Analysis



Current NAV vs. Market Price

Current NAV/Share (April 10):	\$6.35²
Market Price:	\$5.20
Discount:	~18%

Implied Value per NFD Share

Juno stake:	~\$4.05
Everything else: (Aviation + distillery + winery + cash + other investments)	~\$1.15

NAV reflects **Juno at its LAST financing price of C\$4.00** in December 2025 —

BEFORE the 2026 drill program

BEFORE a maiden resource estimate

BEFORE road construction begins

BEFORE any future exploration upside

The operating platform, cash, and entire non-Juno portfolio are being valued at a fraction of book value.

1 – All amounts in Canadian Dollars

2 - Estimates are management calculations after giving effect to the completion of Juno Corp. transaction announced in the Company's news release dated April 2, 2026. NAV/share reflects Juno at its most recent private financing price (C\$4.00/share). NAV does not incorporate any value for exploration upside, resource definition, or district-scale discovery potential.



The Only Public Gateway

Northfield is the only publicly traded company with significant direct exposure to Juno Corp.

Private

Juno Corp. is private.
No public shares available

~35%

Northfield's ownership
Founder & largest shareholder

1:1

NFD holds ~1 Juno share
for every NFD share

~C\$109M

Implied value NFD's Juno stake (~35% x C\$314M)
That's ~78% of NFD's entire market cap of ~C\$140M

The *only* public entry point to *Ontario's Ring of Fire*
— at a *discount* to its own book value.

Capital Structure

As of April 10, 2026 (Post Juno Share Acquisition Transaction)

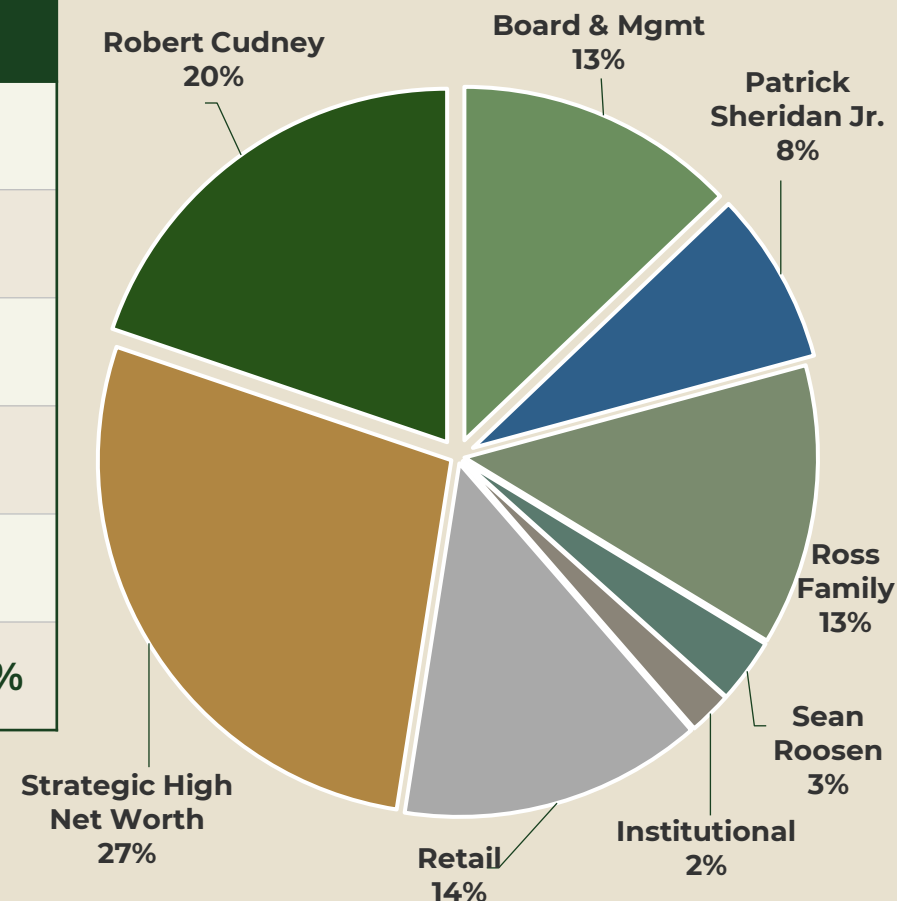


Category	Amount	Details
Class A Shares	27,006,360	Restricted voting
Class B Shares	35,411	Multiple voting
Total Basic	27,041,771	
Options	1,000,000	@ \$4.30
Warrants (\$5.00)	2,324,150	Exp. 2029
Warrants (\$7.50)	2,727,272	Exp. 2027
Fully Diluted	33,093,193	

Key Metrics ¹	
Market Cap	\$140M
Share Price	\$5.20
NAV / Share	\$6.35 ²
Discount to NAV	~18%
Juno Stake Value	\$109M
NCIB Active	Up to 5%

Ownership Breakdown

Tightly Held: 86%



1 – Amounts in Canadian Dollars

2 – NAV/share reflects Juno at its most recent private financing price (C\$4.00/share). NAV does not incorporate any value for exploration upside, resource definition, or district-scale discovery potential.

Northfield Capital

Northfield Capital – The Premier Public Gateway to the Ring of Fire

The strategy is clear – leverage new capital to *deepen our position, accelerate discovery*, and position for *maximizing shareholder value*.

Northfield’s priority is to *systematically increase its Juno stake, fund aggressive exploration programs*, and position remaining portfolio assets for *strategic value realization*.



1

Proven Team

\$5B+ in realized shareholder value. Discovery-to-exit track record spanning four decades.

2

Dominant Exposure to ROF

52% of Canada's Ring of Fire through Juno. Two district-scale discoveries: gold and critical minerals.

3

Valuation Disconnect

Trading at ~18% discount to a NAV that hasn't yet priced in 2026 drill results, a maiden resource estimate, road construction, or future exploration success.

4

Multiple Catalysts

Drill results, resource estimates, infrastructure — supported by the strongest commodity cycle in a decade.

5

Only Public Access

Juno is private. Northfield is the only publicly traded way in.



We believe we are positioned for *material value creation* through Canada's most significant precious metals and critical minerals discoveries in *Ontario's Ring of Fire*.



NORTHFIELD

CAPITAL CORPORATION

Contact

Michael G. Leskovec, CPA, CA
Chief Financial Officer
mike@northfieldcapital.com
+1 416-908-6431

TSXV : **NFD.A**



Scan to download presentation
NorthfieldCapital.com

The Premier Public Gateway to *Ontario's Ring of Fire*

APPENDIX A – Juno Drilling Highlights: North Edge & Pluto



	Hole	From	To	Length	Au g/t (PA)	Au g/t (FA)	Au g/t (Screen)
SUMMER	NDG-24-001	113.00	116.00	3.00		0.17	
	NDG-24-001	134.00	134.70	0.70		0.12	
	NDG-24-002	14.25	16.75	2.50		0.13	
	NDG-24-002	19.47	21.74	2.27		25.93	
	including	19.47	20.27	0.80		72.90	
	NDG-24-002	132.00	132.87	0.87		0.76	
FALL	NDG-24-003	34.71	36.12	1.41	0.07	0.10	
	NDG-24-003	93.20	95.25	2.05	1.23	1.71	
	NDG-24-004	103.00	103.60	0.60	0.16	0.15	
	NDG-24-004	183.00	187.19	4.19	0.38	0.25	
	NDG-24-005	72.50	74.00	1.50	0.28		
	NDG-24-005	125.20	126.15	0.95	0.29		
	NDG-24-005	207.00	208.07	1.07	0.05	0.10	
	NDG-24-006	29.00	30.50	1.50	0.10		
	NDG-24-006	108.50	109.50	1.00	0.19	0.13	
	NDG-24-007	70.35	71.30	0.95	0.91	0.66	
	NDG-24-007	106.00	107.00	1.00	0.10	0.09	
	NDG-24-007	127.00	128.50	1.50	0.10	0.04	
	NDG-24-007	131.50	133.00	1.50	0.14	0.02	
	NDG-24-007	144.00	145.50	1.50	0.24	0.50	
	NDG-24-008	54.30	55.65	1.35	0.48	0.19	
	NDG-24-008	123.50	124.40	0.90	0.15	0.17	
	NDG-24-008	159.50	161.00	1.50	0.17	0.15	
	NDG-24-008	200.40	201.60	1.20	0.13	0.09	
	NDG-24-008	215.30	226.00	10.70	0.46	0.32	
	including	222.00	223.00	1.00	3.53	1.93	
	NDG-24-008	235.40	237.00	1.60	0.10	0.07	
	NDG-24-009	41.50	42.90	1.40	0.19	0.09	
	NDG-24-009	78.95	80.00	1.05	0.10	0.08	
	NDG-24-010	36.00	37.50	1.50		0.13	
NDG-24-010	100.00	101.50	1.50		0.34		
NDG-24-010	119.50	121.00	1.50		0.31		

QA/QC Drill core was logged and sampled at Juno's Oval Lake Camp in the Ring of Fire. Blanks and Certified Reference Materials were inserted into the sample stream at appropriate intervals according to CIM Best Practices. Sampled core was split and sent to one of three ALS Canada Ltd. Preparatory Labs: ALS Sudbury, ALS Timmins, and ALS Thunder Bay. Core samples were crushed, pulverized, and split before being sent for assay determination. Samples were sent to ALS Vancouver for Au grade determination via (Code PGM-ICP23) fire assay (30g sample analyzed by ICP-AES). Samples above 10 g/t Au were further analyzed via (Code Au-GRA21) a gravity finish at ALS Vancouver. Select samples were sent to ALS Thunder Bay for analysis via (Code Au-PA01) Photon Assay on 500g samples as check assays. Select samples in intervals with noted Visible Gold were sent for Metallic Screens (Code Au-SCR21) consisting of a 100 micron screen on 1kg pulp with AAS finish, completed at ALS Vancouver.

CONT.	Hole	From	To	Length	Au g/t (PA)	Au g/t (FA)	Au g/t (Screen)	
SUMMER	PLU-24-001	39.00	40.00	1.00		0.11		
	PLU-24-001	48.00	49.00	1.00		0.17		
	PLU-24-001	83.00	84.00	1.00		0.10		
	PLU-24-001	104.00	107.75	3.75	73.72	30.78	78.88	
	including	104.90	105.50	0.60	350.00	145.00	370.00	
	including	106.90	107.75	0.85	0.02	0.68	3.15	
	PLU-24-001	175.00	176.50	1.50		0.18		
	PLU-24-002	77.50	79.20	1.70		0.11		
	PLU-24-002	81.00	83.00	2.00		0.17		
	PLU-24-002	88.50	90.00	1.50		0.72		
	PLU-24-002	218.50	221.00	2.50		2.03	1.16	
	including	218.50	219.00	0.50		5.02		
	PLU-24-003	115.24	116.00	0.76		0.15		
	PLU-24-003	127.70	128.00	0.30		0.50		
	PLU-24-003	157.81	159.45	1.64		0.19		
	PLU-24-003	161.00	162.60	1.60	3.89	6.19		
	PLU-24-003	172.52	173.25	0.73		0.68		
	PLU-24-003	238.00	239.00	1.00		0.38		
	PLU-24-004	139.12	141.00	1.88		10.22	5.23	
	including	139.12	140.00	0.88	14.34	21.60	11.10	
	PLU-24-004	152.00	154.00	2.00		0.76	0.64	
	including	152.00	153.17	1.17	0.93	1.26	0.96	
	FALL	PLU-24-005	49.00	50.00	1.00	0.17	0.07	
		PLU-24-005	79.00	90.00	11.00	0.52	0.71	
PLU-24-005		260.00	261.00	1.00	0.32	0.39		
PLU-24-005		325.53	326.00	0.47	1.22	0.71		
PLU-24-005		369.50	382.00	12.50	0.13	0.09		
including		369.50	374.50	5.00	0.19	0.13		
including		380.50	382.00	1.50	0.26	0.27		
PLU-24-006		98.00	104.00	6.00	0.36	0.29		
PLU-24-006		110.00	113.00	3.00	0.27	0.21		
PLU-24-006		222.50	224.00	1.50	0.11	0.01		
PLU-24-006		317.00	330.50	13.50	0.38	0.37		
including		317.00	321.00	4.00	1.13	0.96		
PLU-24-006		344.00	345.00	1.00	0.19	0.56		
PLU-24-006		353.00	354.00	1.00	0.31	0.09		
PLU-24-006		383.00	384.00	1.00	0.47	0.40		
PLU-24-006		388.22	389.23	1.01	0.63	0.73		
PLU-24-006	396.50	398.00	1.50	0.46	0.37			
PLU-24-006	447.00	448.00	1.00	0.05	0.12			
PLU-24-006	465.50	467.00	1.50	0.17	0.12			

CONT.	Hole	From	To	Length	Au g/t (PA)	Au g/t (FA)	Au g/t (Screen)
FALL cont.	PLU-24-007	74.00	75.00	1.00	0.19	0.17	
	PLU-24-007	75.98	77.50	1.52	0.17	0.10	
	PLU-24-007	180.21	182.97	2.76	0.35	0.07	
	PLU-24-007	198.00	199.00	1.00	0.10	0.08	
	PLU-24-007	201.50	212.00	10.50	0.13	0.23	
	including	210.50	212.00	1.50	0.31	0.97	
	PLU-24-007	234.50	236.00	1.50	0.12	0.10	
	PLU-24-007	249.50	251.00	1.50	0.13	0.13	
	PLU-24-007	263.00	264.50	1.50	0.14	0.24	
	PLU-24-007	270.50	273.50	3.00	0.15	0.04	
	PLU-24-007	297.00	313.00	16.00	2.72	3.97	
	including	297.00	301.00	4.00	10.73	15.78	
	including	297.00	298.00	1.00	42.02	61.20	
	PLU-24-007	327.50	329.00	1.50	0.90	0.71	
	PLU-24-007	336.50	338.00	1.50	0.26	0.25	
	PLU-24-007	345.50	347.00	1.50	0.07	0.11	
	PLU-24-007	371.00	372.50	1.50	0.02	0.14	
	PLU-24-007	480.50	482.00	1.50	0.14	0.12	
	PLU-24-008	73.50	75.00	1.50	0.06	1.40	
	PLU-24-008	76.50	78.00	1.50	0.16	0.03	
	PLU-24-008	95.50	97.00	1.50	0.29	0.45	
	PLU-24-008	235.50	237.00	1.50	0.35	0.23	
	PLU-24-008	244.50	249.00	4.50	0.30	0.25	
	PLU-24-008	402.50	404.00	1.50	0.29	0.21	
	PLU-24-009	248	251.88	3.88	0.28	0.33	
	including	249	249.70	0.70	0.85	0.86	
	PLU-24-009	254.50	256.00	1.50	0.11	0.14	
	PLU-24-010	124.00	125.50	1.50		0.39	
	PLU-24-010	196.50	199.50	3.00		0.43	
	PLU-24-011	176.00	177.50	1.50		0.16	
	PLU-24-011	179.00	180.50	1.50		0.23	
	PLU-24-011	216.50	218.00	1.50		0.12	
PLU-24-011	228.55	230.00	1.45		0.23		
PLU-24-011	231.50	236.00	4.50		0.74		
PLU-24-011	257.00	258.50	1.50		0.14		
PLU-24-011	261.50	263.00	1.50		0.13		
Gap							
PLU-24-015	150.00	151.50	1.50		0.15		
Gap							
PLU-24-016	116.00	117.50	1.50		0.89		

APPENDIX A – Juno Drilling Highlights: North Edge & Pluto



Hole	From	To	Length	Au g/t
NDG-24-001	113.00	116.00	3.00	0.17
NDG-24-002	14.25	16.75	2.50	0.13
NDG-24-002	19.47	21.74	2.27	25.9
including	19.47	20.27	0.80	72.9
NDG-24-002	132.00	132.87	0.87	0.76
NDG-24-003	93.20	95.25	2.05	1.71
NDG-24-004	183.00	187.19	4.19	0.25
NDG-24-005	72.50	74.00	1.50	1.07
NDG-24-005	125.20	126.15	0.95	0.18
NDG-24-006	anomalous gold results			
NDG-24-007	70.35	71.30	0.95	0.66
NDG-24-007	144.00	145.50	1.50	0.50
NDG-24-008	215.30	226.00	10.70	0.32
including	222.00	223.00	1.00	1.93
NDG-24-009	anomalous gold results			
NDG-24-010	100.00	101.50	1.50	0.34
NDG-24-010	119.50	121.00	1.50	0.31
PLU-24-001	104.00	107.75	3.75	78.9 *1
including	104.90	105.50	0.60	370 **1
including	106.90	107.75	0.85	3.15 **1
PLU-24-002	88.50	90.00	1.50	0.72
PLU-24-002	218.50	221.00	2.50	1.16**1
including	218.50	219.00	0.50	5.02**1
PLU-24-003	127.70	128.00	0.30	0.50
PLU-24-003	161.00	162.60	1.60	6.19
PLU-24-003	172.52	173.25	0.73	0.68
PLU-24-003	238.00	239.00	1.00	0.38
PLU-24-004	139.12	141.00	1.88	5.23**1
including	139.12	140.00	0.88	11.1**1
PLU-24-004	152.00	154.00	2.00	0.64**1
including	152.00	153.17	1.17	0.96**1

Hole	From	To	Length	Au g/t
PLU-24-005	79.00	90.00	11.00	0.71
PLU-24-005	260.00	261.00	1.00	0.39
PLU-24-005	325.53	326.00	0.47	0.71
PLU-24-005	380.50	382.00	1.50	0.27
PLU-24-006	98.00	104.00	6.00	0.29
PLU-24-006	110.00	113.00	3.00	0.21
PLU-24-006	317.00	330.50	13.50	0.37
including	317.00	321.00	4.00	0.96
PLU-24-006	344.00	345.00	1.00	0.56
PLU-24-006	383.00	384.00	1.00	0.40
PLU-24-006	388.22	389.23	1.01	0.73
PLU-24-006	396.50	398.00	1.50	0.37
PLU-24-007	201.50	212.00	10.50	0.23
including	210.50	212.00	1.50	0.97
PLU-24-007	297.00	313.00	16.00	3.97
including	297.00	301.00	4.00	15.8
including	297.00	298.00	1.00	61.2
PLU-24-007	327.50	329.00	1.50	0.71
PLU-24-007	336.50	338.00	1.50	0.25
PLU-24-008	73.50	75.00	1.50	1.40
PLU-24-008	95.50	97.00	1.50	0.45
PLU-24-008	235.50	237.00	1.50	0.23
PLU-24-008	244.50	249.00	4.50	0.25
PLU-24-008	402.50	404.00	1.50	0.21
PLU-24-009	248.00	251.88	3.88	0.33
including	249.00	249.70	0.70	0.86
PLU-24-010	124.00	125.50	1.50	0.39
PLU-24-010	196.50	199.50	3.00	0.43
PLU-24-011	179.00	180.50	1.50	0.23
PLU-24-011	228.55	237.50	8.95	0.43
including	231.50	236.00	4.50	0.74
PLU-24-012	18.33	19.50	1.17	0.18
PLU-24-012	31.50	32.50	1.00	0.28
PLU-24-012	189.00	192.00	3.00	0.33
PLU-24-012	220.00	223.50	3.50	0.19
PLU-24-013	297.00	303.50	6.50	1.87
including	297.00	299.00	2.00	5.14
PLU-24-014	78.00	82.50	4.50	0.18
PLU-24-015	anomalous gold results			
PLU-24-016	116.00	117.50	1.50	0.89

Hole	Easting	Northing	Elevation	Azimuth	Dip	Length
NDG-24-001	538351	5904725	155	180	-65	248
NDG-24-002	538420	5904667	155	0	-70	251
NDG-24-003	538400	5904640	155	45	-65	252
NDG-24-004	538332	5904627	155	45	-55	252
NDG-24-005	538332	5904627	155	315	-55	252
NDG-24-006	538440	5904895	155	359.77	-55.01	255
NDG-24-007	539015	5904590	155	334.94	-54.98	252
NDG-24-008	543880	5903710	155	334.77	-55.11	252
NDG-24-009	543550	5904020	155	45	-55	252
NDG-24-010	543455	5903995	155	325	-55	252
PLU-24-001	526659	5906774	155	250	-80	225
PLU-24-002	526659	5906774	155	250	-70	249.39
PLU-24-003	526620	5906695	155	15	-55	249
PLU-24-004	526505	5906990	155	285	-55	251
PLU-24-005	526470	5906630	155	49.9	-50	413
PLU-24-006	526470	5906630	155	50.1	-70.1	473
PLU-24-007	525950	5907265	155	39.56	-45.25	500
PLU-24-008	526795	5906381	155	40.3	-50.26	461
PLU-24-009	525390	5906580	155	350	-60	491
PLU-24-010	525980	5906680	155	10	-55	252
PLU-24-011	525390	5906580	155	350	-45	476
PLU-24-012	526740	5906486	155	50	-55	252
PLU-24-013	525390	5906580	155	350	-75	416
PLU-24-013a	525390	5906580	155	350	-75	20
PLU-24-014	526981	5906242	150	30	-55	252
PLU-24-014a	526981	5906242	150	30	-55	54
PLU-24-015	529165	5905805	155	20	-45	347
PLU-24-016	526181	5907288	155	55	-60	150